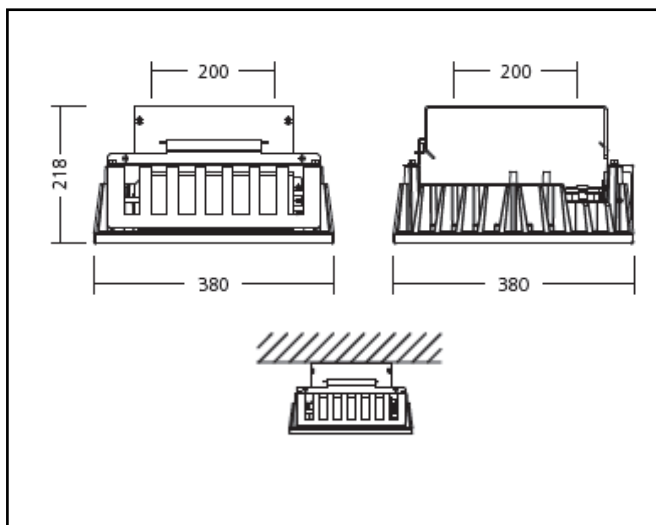


Product data sheet

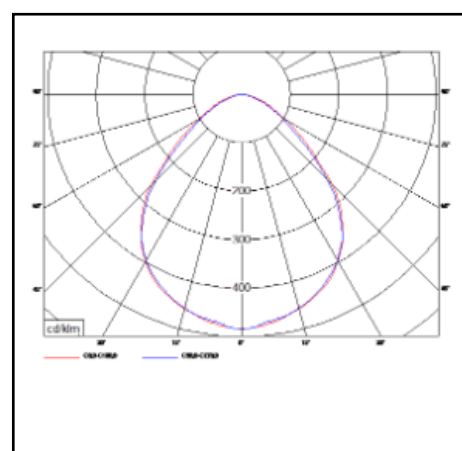
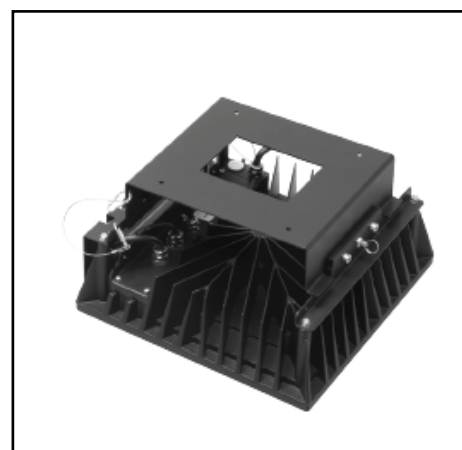


MYAR II SUSPENDED

105W – 273W 15300lm – 33300lm



Description	Suspended fixture
Dimensions (mm)	380 x 380mm x 218mm
Weight (kg)	14,300 kg
Housing	Housing: die cast alu + sheet steel
Colour	Black (Ra9005)
Optical system	PMMA + glass
Lighting Distribution	Direct 100° - symmetrical
Unified Glare Ratio	<22
Colour temperature (K)	3000K – 5000K
CRI (Ra)	80
SCDM	3
Net lumen output (25°C)	15300lm – 33300lm
Efficacy – LOR (lm/W)	121lm/W – 146lm/W
Power (driver incl.)	105W – 273W
Driver	Driver incorporated Non dim, DALI, DSI or 1-10V DIM
IP	IP 66
IK	IK 09
Lifetime (hours)	100.000 hours L90 B10
Warranty	5 years
Origin	Slowakja
Norms	LVD 2006/95/EC EMC 2004/108/EC RoHS 2001/65/EC



All specifications, descriptions and images are purely informative, not binding and subject to errors and changes

Euro-Luce Light Engineering
Ballingsweg 25 – 9620 Zottegem
info@euro-luce.be
www.euro-luce.be
Tel 0032 54 55 71 10

Marks

