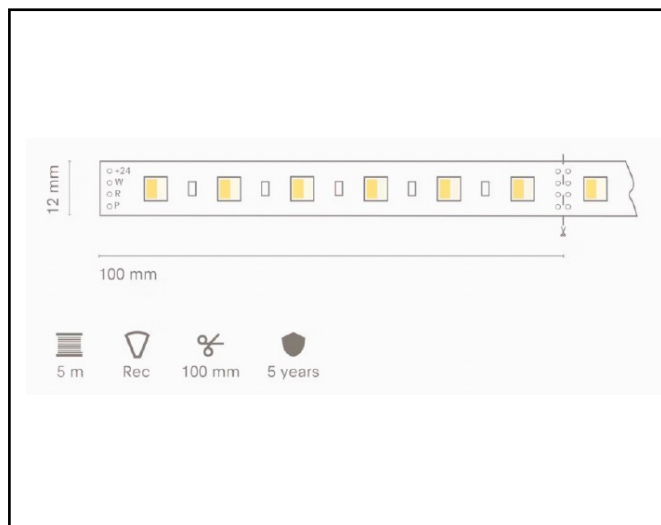


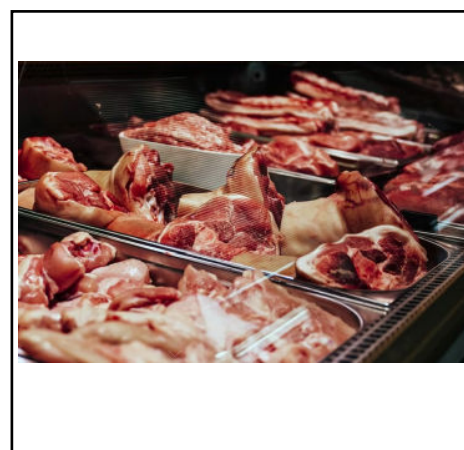
# Product data sheet

## LED STRIP Marienplatz

LEDstrip Vlees, vis , kaas , brood



<b>Description</b>	Linear LED strip 24V IP67 60leds/m
<b>Dimensions (mm)</b>	5000mm x 12m x 4mm
<b>Weight (kg)</b>	0,250 kg/m
<b>Housing</b>	IP67
<b>Colour</b>	
<b>Optical system</b>	
<b>Lighting Distribution</b>	120°
<b>Unified Glare Ratio</b>	
<b>Colour temperature (K)</b>	Meat – Bread - Fish
<b>CRI (Ra)</b>	
<b>SCDM</b>	4
<b>Net lumen output (25°C)</b>	480lm/m – 380lm/m – 360lm/m
<b>Efficacy – LOR (lm/W)</b>	93lm/W
<b>Power (driver incl.)</b>	9,4W/m (M) – 5,2W/m (B-F)
<b>Driver</b>	No driver
<b>IP</b>	IP 67
<b>IK</b>	IK 02
<b>Lifetime (hours)</b>	40,000 h
<b>Warranty</b>	5 years
<b>Origin</b>	Spain
<b>Norms</b>	



All specifications, descriptions and images are purely informative, not binding and subject to errors and changes

Euro-Luce Light Engineering  
Ballingsweg 25  
9620 Zottegem  
[info@euro-luce.be](mailto:info@euro-luce.be)  
[www.euro-luce.be](http://www.euro-luce.be)  
Tel 0032 54 55 71 10

Marks